



Irish College of Humanities & Applied Sciences



# PSYCHOLOGY & BEHAVIOURAL SCIENCE MASTERS PROGRAMMES

**ICHAS Work-Related Psychology and Behavioural Sciences Programmes are accredited by the Association for Business Psychology. On successful graduation, students who complete this ABP accredited Masters Degree can use the title “ABP Certified Business Psychologist (CBP)”.**



**Griffith College and ICHAS have worked together for over 10 years in the delivery and hosting of ICHAS programmes**

International students on these programmes will have the advantage of being taught across two campuses in Limerick – both at GCL and ICHAS. The shared campus arrangements will mean that students will benefit from shared expertise and experience in terms of academic, pastoral, and cultural learning. International students may apply for September 2024 intake at <https://www.griffith.ie/apply-online>

*The Masters' in Work-Related Psychology and Work-Related Behaviour are ICHAS (Irish College of Humanities and Applied Sciences) programmes and ICHAS are responsible for their delivery and all academic matters pertaining to same.*



# MA IN WORK-RELATED PSYCHOLOGY

## MA IN WORK-RELATED PSYCHOLOGY

90 ECTS

The MA in Work-Related Psychology enables learners to understand the principles of Work-Related Psychology, which is an evolving area of influence in psychological studies, ultimately aiming to improve the quality of work life, and to protect and promote the safety, health and well-being of workers.

### MANDATORY MODULES (70 ECTS) FOR ALL PROGRAMMES:

Principles of Work Psychology	10 ECTS
Organisational Psychology	10 ECTS
Personnel & Human Resource Psychology	10 ECTS
Research Methodologies & Design	10 ECTS
Dissertation	30 ECTS

### ELECTIVE MODULES (20 ECTS):

#### Entrepreneurship

Psychology of Entrepreneurship	10 ECTS
Creativity & Business Innovation	10 ECTS

#### Leadership & Management

Managing People in Organisations	10 ECTS
Leadership Change & Teamwork	10 ECTS

#### Mentoring & Coaching

Principles, Competencies and Practices of Mentoring & Coaching	10 ECTS
Learning, Engagement and Wellbeing in the workplace	10 ECTS

#### Customer Relationship Management

Customer Relationship Management	10 ECTS
Theoretical Perspectives on Consumer Experiences	10 ECTS

Learners may select **ANY 2 INDIVIDUAL ELECTIVES** from the thematic areas above.

### ENTRY REQUIREMENT

- Applicants must hold a relevant Level 8 programme BA (Hons) or a BSc (Hons) in Psychology at a minimum of a 2.2 standard.
- All applicants are required to be over 23 years of age.

### CAREER AND PROGRESSION OPPORTUNITIES

Include but are not limited to:

- Human Resource Management
- Training and Development Management
- Employee Relations Management
- Organizational Development Consultants
- Level 10 (Doctoral) study progression opportunities.

# MASTERS IN WORK-RELATED BEHAVIOUR

**With Entrepreneurship  
(90 ECTS)**

**With Mentoring & Coaching  
(90 ECTS)**

**With Leadership & Management  
(90 ECTS)**

**With Customer Relationship  
Management (90 ECTS)**

ICHAS's suite of M.As in Work-Related Behaviour are designed for graduates from a broad range of disciplines including Psychology, Business, Humanities, Health, Social Sciences etc., who wish to enhance their own professional skills in creating successful ventures by harnessing the power of organisational behaviour and leadership.

## MANDATORY MODULES (70 ECTS) FOR ALL PROGRAMMES:

Principles of Work Psychology	10 ECTS
Organisational Psychology	10 ECTS
Personnel & Human Resource Psychology	10 ECTS
Research Methodologies & Design	10 ECTS
Dissertation	30 ECTS

**MA in Work-Related Behaviour award stream is determined by the paired modules chosen.**

### MA in Work-Related Behaviour with Entrepreneurship

Psychology of Entrepreneurship	10 ECTS
Creativity & Business Innovation	10 ECTS

### MA in Work-Related Behaviour with Leadership & Management

Managing People in Organisations	10 ECTS
Leadership Change & Teamwork	10 ECTS

### MA in Work-Related Behaviour with Mentoring & Coaching

Principles, Competencies and Practices of Mentoring & Coaching	10 ECTS
Learning, Engagement and Wellbeing in the workplace	10 ECTS

### MA in Work-Related Behaviour with Customer Relationship Management

Customer Relationship Management	10 ECTS
Theoretical Perspectives on Consumer Experiences	10 ECTS

## ENTRY REQUIREMENT

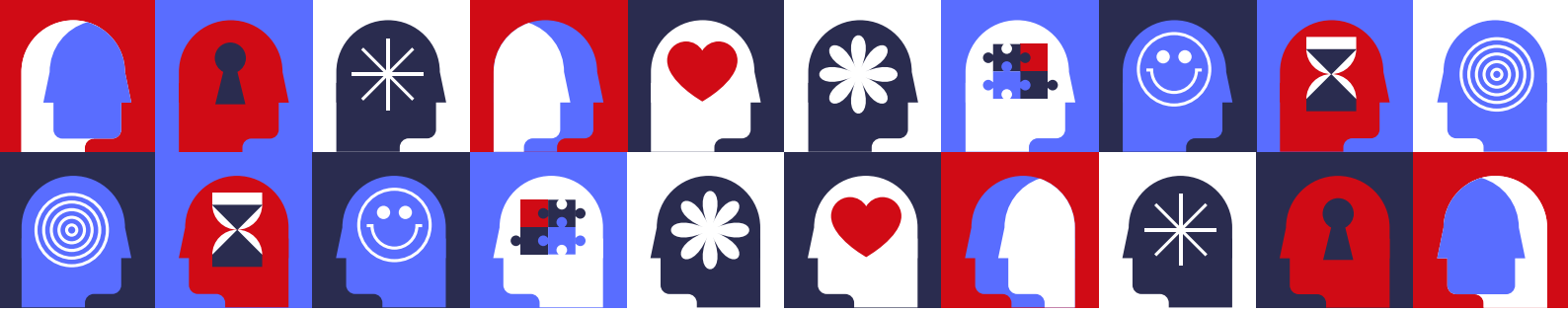
Applicants must hold a relevant Level 8 programme (including, but not limited to Psychology, Humanities, Health & Social Sciences or Business at a minimum of a 2.2 standard) who wish to engage in further-study in this field.

## CAREER AND PROGRESSION OPPORTUNITIES

Include but are not limited to:

- Human Resource Management
- Training and Development Management
- Employee Relations Management
- Organizational Development Consultants
- Level 10 (Doctoral) study progression opportunities.





## ABOUT ICHAS

The Irish College of Humanities and Applied Sciences (ICHAS) is an independent third-level college that prides itself on its student-centred approach. ICHAS programmes cover an extensive range of disciplines including Business, Childcare, Psychology, Counselling and Psychotherapy.

Griffith College and ICHAS have worked together for over 10 years in the delivery and hosting of ICHAS programmes on our campuses in Dublin, Cork, and Limerick.



## GRIFFITH COLLEGE LIMERICK



Established in 1974, Griffith College is Ireland largest independent third level institution with campuses in Dublin, Cork, and Limerick. The Griffith College Limerick campus is based on O'Connell Avenue, and is at the heart of the city.